

LEGAL DISCLAIMER

Please be aware, that any alteration made to the VELUX® products using our units voids VELUX® warranty.

You are asked to remove the CE-marking from the modified VELUX® product, as when modified, it is no longer in force.

Removing the rain sensor creates a risk of water damage.

Your installation has to be protected against unexpected movement and provide a safety against entrapment and meet other requirements in accordance with applicable regulations.

VELUX® is a registered trademark and belongs to its respective owner.

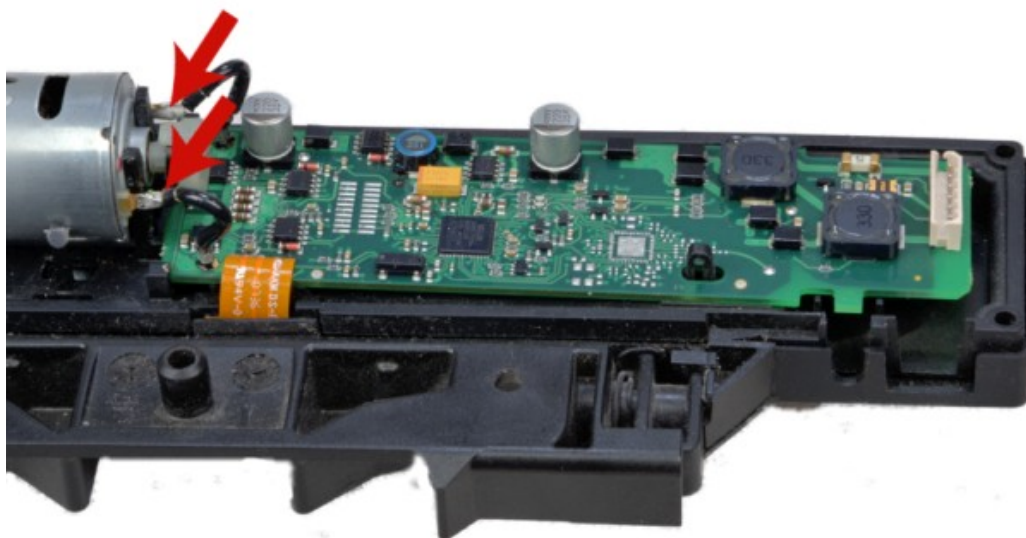
Installation manual of VNX-A driver

STEP 1



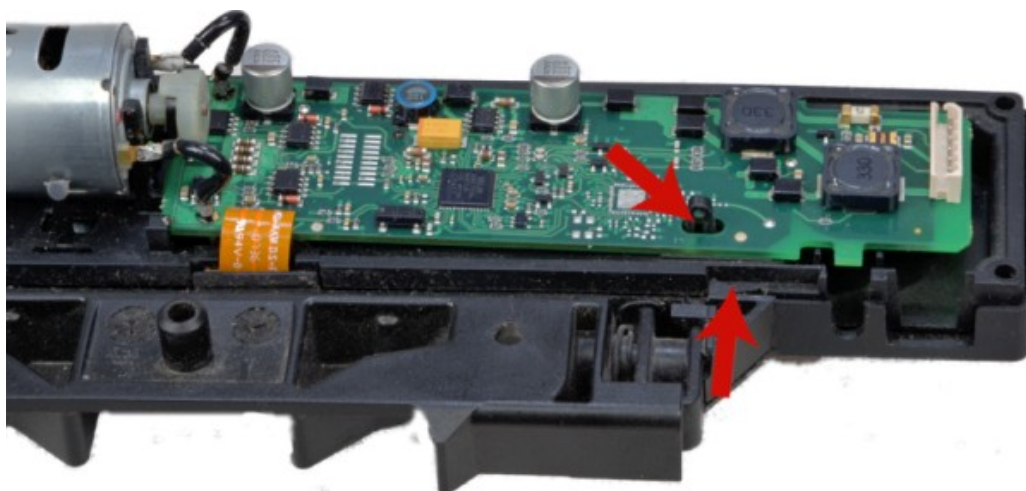
Remove five TORX10 screws holding the top cover and take off the lid.

STEP 2



Unsolder the wires from electric motor.

STEP 3



Remove the electronic module by pressing shown plastic snaps.

STEP 4



Disassembled module is ready for installation of VNX-A controller.

STEP 5



Install a VNX-A controller & solder the wires to the electric motor only (do not resolder the orange flat ribbon cable as it is to be extracted). Module is ready for operation. Connect the supply wires and assemble back the lid.