

LEGAL DISCLAIMER

Please be aware, that any alteration made to the VELUX® products using our units voids VELUX® warranty.

You are asked to remove the CE-marking from the modified VELUX® product, as when modified, it is no longer in force.

Removing the rain sensor creates a risk of water damage.

Your installation has to be protected against unexpected movement and provide a safety against entrapment and meet other requirements in accordance with applicable regulations.

VELUX® is a registered trademark and belongs to its respective owner.

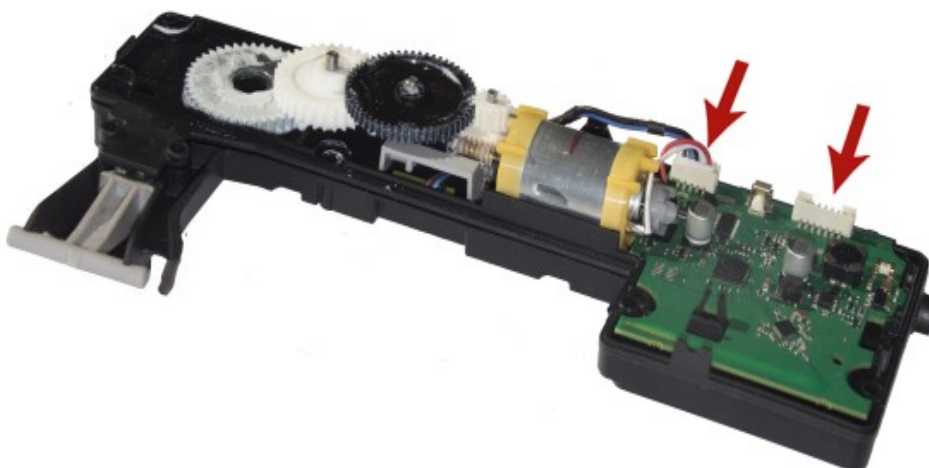
Installation manual of VNX-C driver

STEP 1

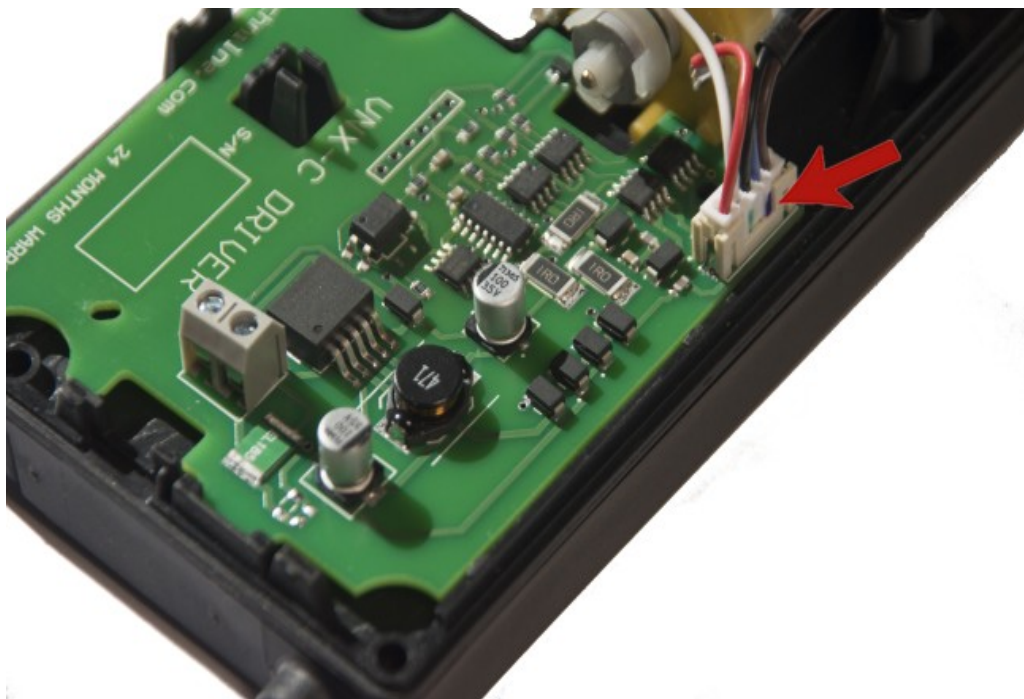


Remove the five TORX10 screws holding the top cover. Remove the cover.

STEP 2



Disconnect the plugs from an electronic module.



STEP 3

Replace the electronic module for VNX-C and connect the plug to a socket marked with the red arrow. Connect the power supply wires. The module is ready for operation.

STEP 4

Assemble back the top cover (in reverse order as per described in step one).