

## **LEGAL DISCLAIMER**

Please be aware, that any alteration made to the VELUX® products using our units voids VELUX® warranty.

You are asked to remove the CE-marking from the modified VELUX® product, as when modified, it is no longer in force.

Removing the rain sensor creates a risk of water damage.

Your installation has to be protected against unexpected movement and provide a safety against entrapment and meet other requirements in accordance with applicable regulations.

VELUX® is a registered trademark and belongs to its respective owner.

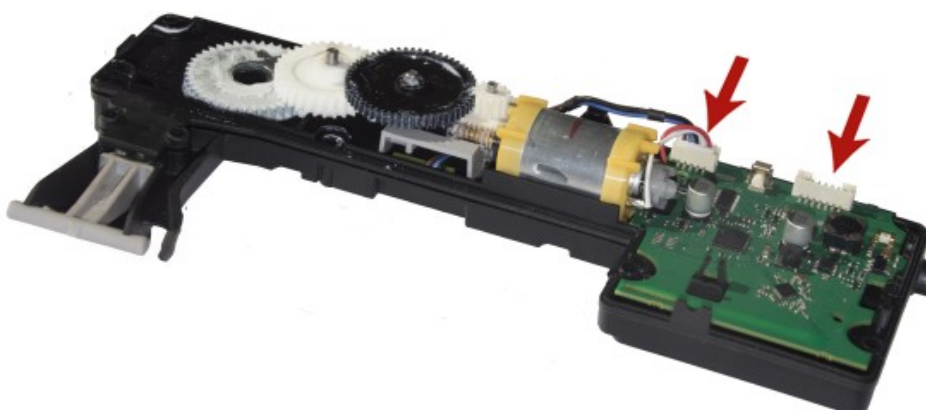
## Installation manual of VNX-C driver

### STEP 1



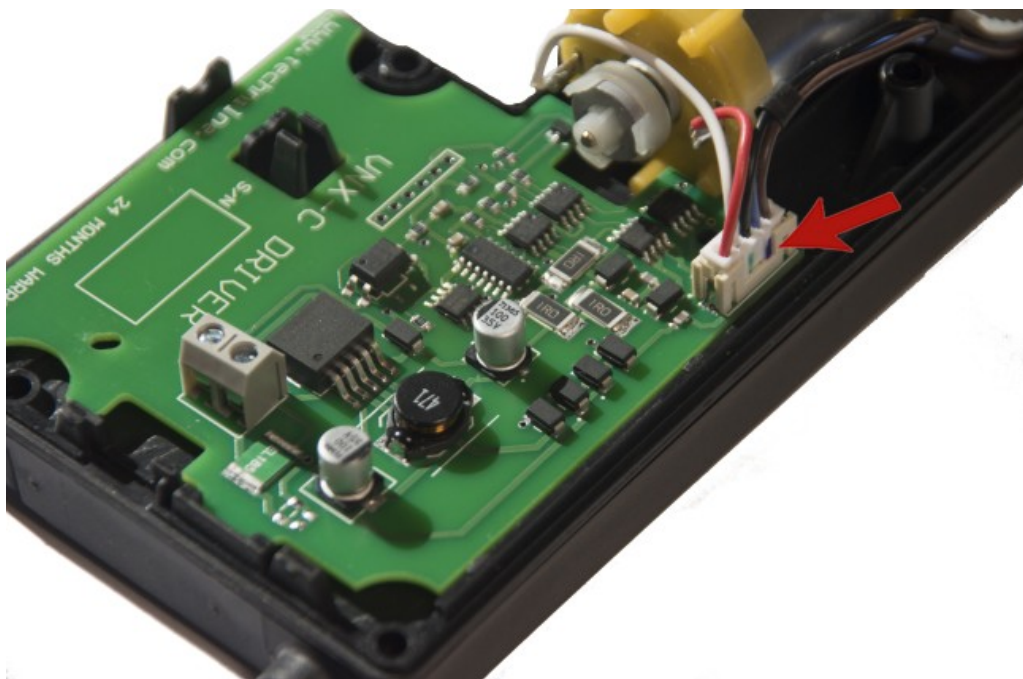
Remove the five TORX10 screws holding the top cover. Remove the cover.

### STEP 2



Disconnect the plugs from an electronic module.

### STEP 3



**Replace the electronic module for VNX-C and connect the plug to a socket marked with the red arrow. Connect the power supply wires. The module is ready for operation.**

### STEP 4

**Assemble back the top cover (in reverse order as per described in step one).**